

Interlude 2 (m2)

work for small orchestra with various soloists (2021)

(from "Sketches of the 20th century")

Franco D'Andrea
&
Eduardo Rojo

Interlude 2 (m2)

Sketche #11

(from "Sketches of the 20th century")

Franco D'Andrea
&
Eduardo Rojo

<https://eduardo-rojo.com/>

INSTRUMENTATION

Wind 1: Alto Sax

Wind 2: Clarinet in Bb and Alto Sax

Wind 4: Bass Clarinet

Tenor Trombone

Bass Trombone

Piano

Double Bass

Violin I

Violin II

Viola

Cello

Soloist: Piano (Franco D'Andrea)


The score is in C.


PERFORMANCE NOTES



BARRING


Bar lines are purely a mean of synchronizing the individual parts, they have no function as metric pulsation. Therefore, the beginning and the subdivisions of a bar should not be stressed. On the contrary, the performer should be even and fluent.


NOTATION

 diminuendo al niente

 crescendo al niente



 Trill (as small as possible,
1/2 step at the most), above,
below or both

 1/4 tone up, between natural and sharp

 1/4 tone down, between natural and flat

MULTIPHONICS

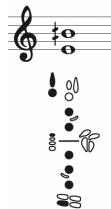
Flute:

Soft multiphonics (from *pp* to *mp*)



Clarinet (written pitch):

Soft multiphonics (from *pp* to *p*)



Duration: ca. 1'57"

Copyright © 2021 by Franco d'Andrea and Eduardo Rojo

<https://www.francodandrea.com/>
<https://eduardo-rojo.com/>

Interlude 2 (m2)

Comp.: Eduardo Rojo

*Composition based on Franco D'Andrea ideas.

A

14"

sul tasto

Gliss

p

sul tasto

p

sul tasto

Gliss

p

Cello

Centricity: F#

p

Piano



B

16"

Vln. I

p

Vln. II

p

Vla.

p

sul tasto

p

Vc.

p

Pno.

C

Musical score for section C, measures 14-15. The score includes staves for Violin I (Vln. I), Violin II (Vln. II), Viola (Vla.), Violoncello (Vc.), and Piano (Pno.).

- Vln. I:** Measure 14 starts with a trill (tr) on a flat note. Measure 15 has a piano (*p*) dynamic marking.
- Vln. II:** Measure 14 has a piano (*p*) dynamic marking.
- Vla.:** Measure 14 has a trill (tr) on a flat note. Measure 15 has a glissando (*Gliss.*) marking.
- Vc.:** Measure 14 has a glissando (*Gliss.*) marking. Measure 15 has a piano (*p*) dynamic marking and a glissando (*Gliss.*) marking.
- Pno.:** The piano part is marked with a double slash (/ /) in both measures, indicating it is not to be played.

Centricity: A



D

Musical score for section D, measures 15-16. The score includes staves for Violin I (Vln. I), Violin II (Vln. II), Viola (Vla.), Violoncello (Vc.), and Piano (Pno.).

- Vln. I:** Measure 15 has a piano (*p*) dynamic marking.
- Vln. II:** Measure 15 has a trill (tr) on a flat note. Measure 16 has a piano (*p*) dynamic marking.
- Vla.:** Measure 15 has a trill (tr) on a flat note. Measure 16 has a glissando (*Gliss.*) marking.
- Vc.:** Measure 16 has a glissando (*Gliss.*) marking and a piano (*p*) dynamic marking.
- Pno.:** The piano part is marked with a double slash (/ /) in both measures, indicating it is not to be played.